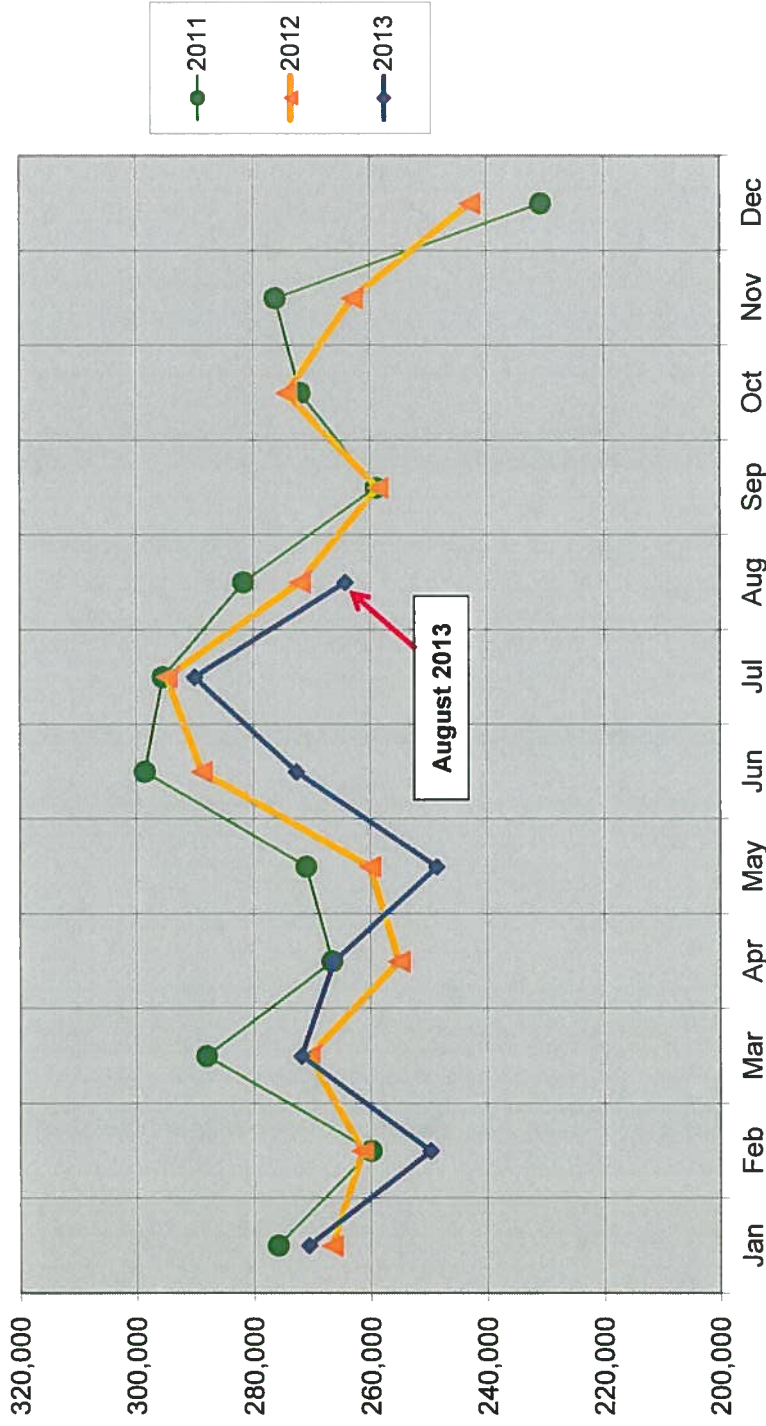


2013 Monthly Activity Report

Borrowers		January	February	March	April	May	June	July	August	Y-T-D	
Total		135,139	136,234	137,180	138,309	139,269	140,617	141,928	143,555		
Purged		---	---	---	---	---	---	---	---		
New		1,473	1,159	1,069	1,155	1,034	1,530	1,422	1,696	10,538	
Collection (print & media)	Added	3,628	3,682	4,328	4,224	4,966	4,137	4,011	4,124	33,100	
	Removed	2,820	210	208	141	140	21,563	4,793	3,621	33,496	
Total number of items (end of month)		403,146	406,552	410,690	414,763	419,583	402,128	401,337	401,824		
Computer Usage											
	Sign up computer sessions	18,382	17,751	17,881	17,304	17,075	17,264	19,280	18,814	143,751	
	Wireless	7,973	10,192	9,979	10,762	9,788	8,296	9,337	10,260	76,587	
Door Traffic		90,867	90,336	98,708	99,628	90,840	98,098	106,807	101,915	777,199	
eMedia Circulation											
	ebooks	8,121	7,235	8,503	8,033	8,350	9,017	9,442	9,200	67,901	
	eaudiobooks	2,142	2,008	2,343	2,047	2,180	2,289	2,524	2,585	18,118	
	emusic	9	7	5	2	2	5	3	2	35	
	evideo	18	7	8	5	5	3	7	3	56	
	emagazine		409	631	586	614	721	644	710	4,315	
	TOTAL	10,290	9,666	11,490	10,673	11,151	12,035	12,620	12,500	90,425	
Database Usage		Sessions/Searches	20,951	33,043	31,547	31,010	21,068	16,608	17,378	15,840	187,445
Programming											
<i>Attendance</i>											
	Children's	3735	3008	3024	2984	2601	2879	5058		23,289	
	Teen	23	45	2	48	19	191	93		421	
	Adult	635	1026	1001	277	651	561	420		4,571	
	All Ages	138	282	575	327	181	65	282		1,850	
	Outreach	984	801	1123	906	4455	891	NA		9,160	
	TOTAL	5,515	5,162	5,725	4,542	7,907	4,587	5,853		39,291	
<i>Number of Programs</i>											
	Children's	105	97	84	107	91	53	75		612	
	Teen	2	2	1	3	2	9	7		26	
	Adult	24	31	27	16	19	24	14		155	
	All Ages	6	7	6	8	3	7	6		43	
	Outreach	59	55	58	49	70	60	NA		351	
	TOTAL	196	192	176	183	185	153	102		1,187	
1st Quarter Volunteer Services											
	Number of volunteer hours			2,914				3,978			
	Number of volunteers			266				335			
Recycled materials (in pounds)		3,228	3,059	5,107	2,137	4,502	3,606			21,639	

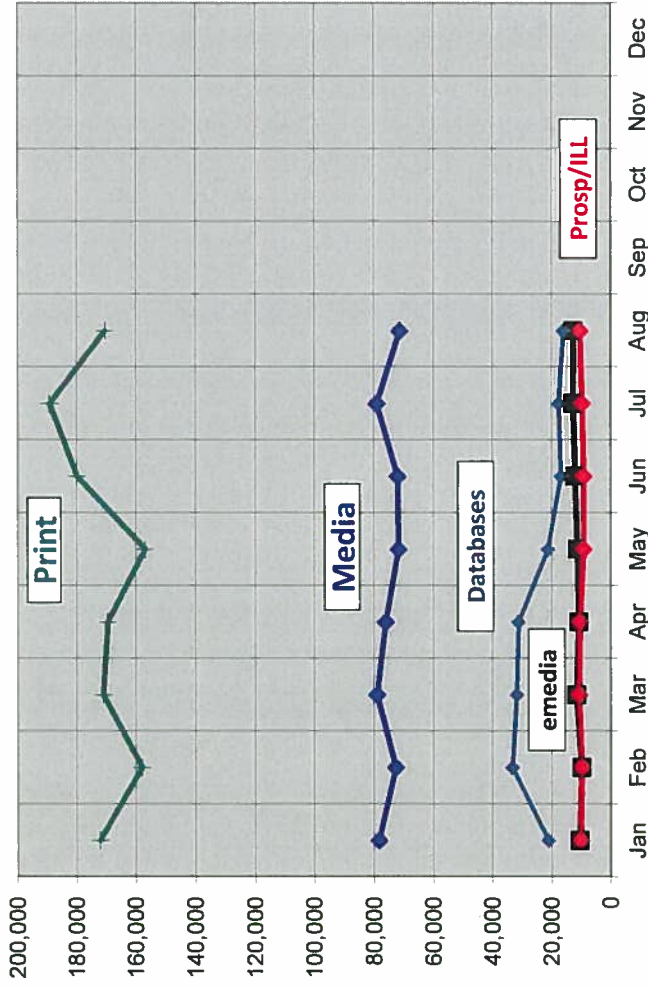
Total Circulation Chart
Includes circulation of print, media and emedia

Monthly Circulation Comparison

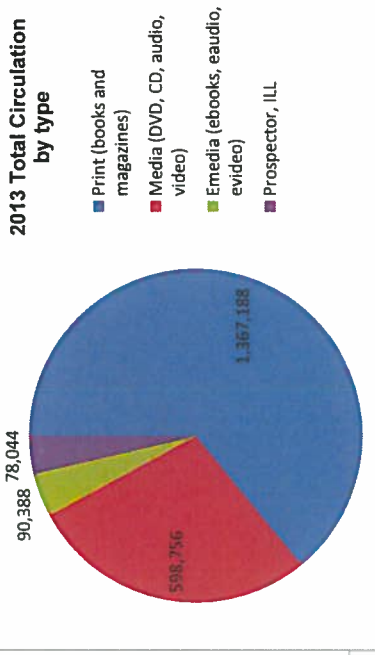


Year	Jan	Feb	Mar	Apr	May	Jun	Jul	Aug	Sep	Oct	Nov	Dec	Total	% increase Y-T-D
2011	275,975	260,005	288,151	266,615	271,044	298,580	295,470	281,755	259,052	271,997	276,243	230,740	3,275,627	
2012	266,673	261,436	270,562	255,139	260,073	288,896	294,807	272,001	258,715	274,271	262,979	242,838	3,208,390	-2.05%
2013	270,643	249,805	271,918	266,301	248,631	272,702	290,114	264,262					2,134,376	-1.62%

2013 Circulation by Type and Database Usage



- Print (books and magazines)
- Media (DVD, CD, audio, video)
- Emedia (ebooks, eaudio, evideo)
- Prospactor, ILL
- Database usage



	Jan	Feb	Mar	Apr	May	Jun	Jul	Aug	Sep	Oct	Nov	Dec	Total
Print (books and magazines)	172,153	157,999	171,062	169,544	156,969	179,914	189,128	170,419	170,419	170,419	170,419	170,419	1,367,188
Media (DVD, CD, audio, video)	78,206	72,518	78,804	75,899	71,485	71,798	78,899	71,147	71,147	71,147	71,147	71,147	598,756
Emedia (ebooks, eaudio, evideo)	10,290	9,666	11,490	10,673	11,151	12,035	12,583	12,500	12,500	12,500	12,500	12,500	90,388
Prospactor, ILL	9,994	9,622	10,562	10,185	9,026	8,955	9,504	10,196	10,196	10,196	10,196	10,196	78,044
Total Circulation	270,643	249,805	271,978	266,307	248,637	272,702	290,114	264,262	264,262	264,262	264,262	264,262	2,134,376
Database usage	20,951	33,043	31,547	31,010	21,068	16,608	17,378	15,840					187,445

Print (books and magazines)
 Media (DVD, CD, audio, video)
 Emedia (ebooks, eaudio, evideo)
 Prospactor, ILL
 Total Circulation
 Database usage