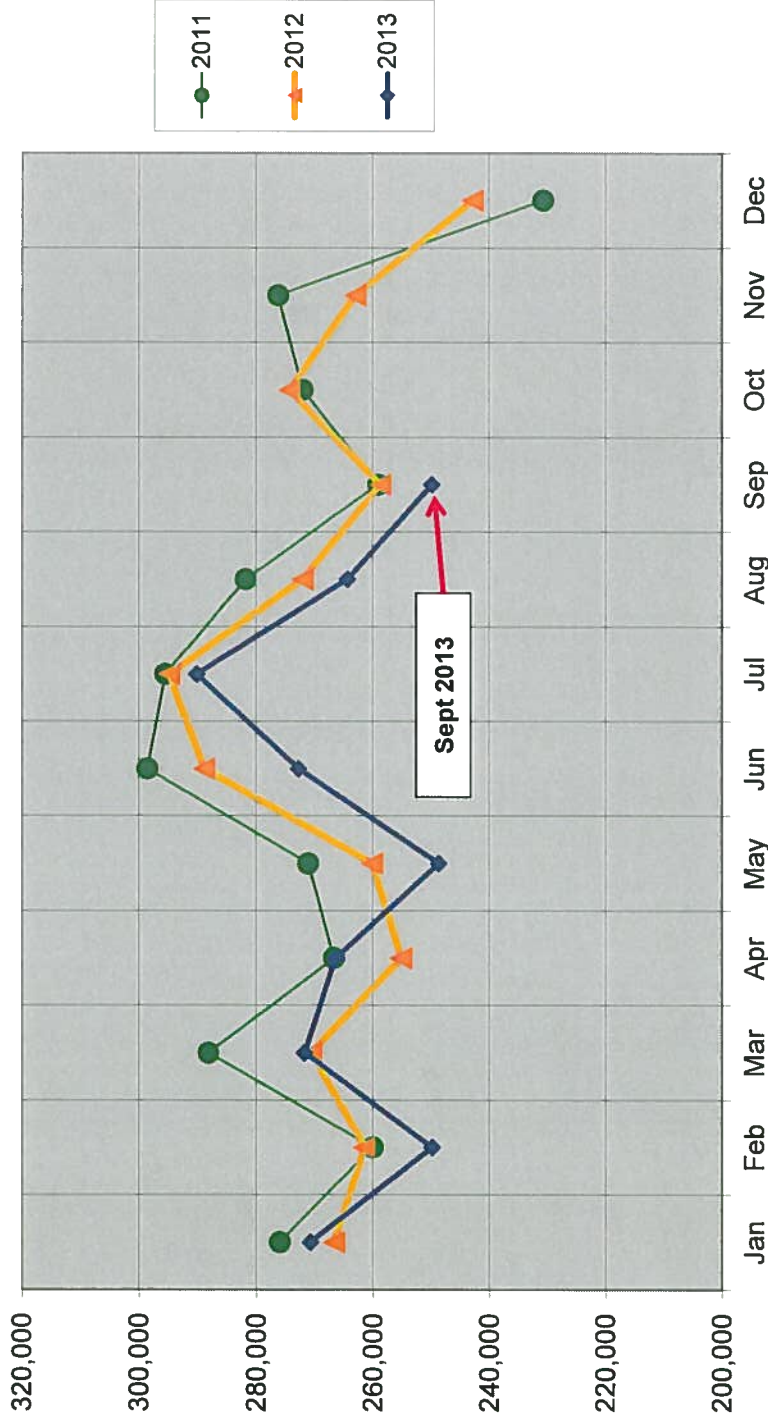


2013 Monthly Activity Report

Borrowers		January	February	March	April	May	June	July	August	Sept	Y-T-D
Total		135,139	136,234	137,180	138,309	139,269	140,617	141,928	143,555	144,885	
Purged		---	---	---	---	---	---	---	---	---	
New		1,473	1,159	1,069	1,155	1,034	1,530	1,422	1,696	1,396	11,934
Collection (print & media)											
Added		3,628	3,682	4,328	4,224	4,966	4,137	4,011	4,124	3,851	36,951
Removed		2,820	210	208	141	140	21,563	4,793	3,621	4,143	37,639
Total number of items (end of month)		403,146	406,553	410,692	414,763	419,583	402,128	401,337	401,824	402,169	
Computer Usage											
Sign up computer sessions		18,382	17,751	17,881	17,304	17,075	17,264	19,280	18,814	15,643	159,394
Wireless		7,973	10,192	9,979	10,762	9,788	8,296	9,337	10,260	11,672	88,259
Door Traffic		90,867	90,336	98,708	99,628	90,840	98,098	106,807	101,915	95,193	872,392
eMedia Circulation											
ebooks		8,121	7,235	8,503	8,033	8,350	9,017	9,442	9,200	8,525	76,426
eaudiobooks		2,142	2,008	2,343	2,047	2,180	2,289	2,524	2,585	2,380	20,498
emusic		9	7	5	2	2	5	3	2	3	38
evideo		18	7	8	5	5	3	7	3	8	64
emagazine			409	631	586	614	721	644	710	628	4,943
TOTAL		10,290	9,666	11,490	10,673	11,151	12,035	12,620	12,500	11,544	101,969
Database Usage											
Sessions/Searches		20,951	33,043	31,547	31,010	21,068	16,608	17,378	15,840	26,076	213,521
Programming											
<i>Attendance</i>											
Children's		3735	3008	3024	2984	2601	2879	5058	70		23,359
Teen		23	45	2	48	19	191	93	22		443
Adult		635	1026	1001	559	651	561	420	737		5,590
All Ages		138	282	575	327	181	65	282	124		1,974
Outreach		984	801	1123	906	4455	891	NA	NA	596	9,756
TOTAL		5,515	5,162	5,725	4,824	7,907	4,587	5,853	953	596	41,122
<i>Number of Programs</i>											
Children's		105	97	84	107	91	53	75	3		615
Teen		2	2	1	3	2	9	5	2		26
Adult		24	31	27	25	19	24	14	22		186
All Ages		6	7	6	8	3	7	6	2		45
Outreach		59	55	58	49	70	60	NA	NA	39	390
TOTAL		196	192	176	192	185	153	100	29	39	1,262
1st Quarter Volunteer Services											
Number of volunteer hours				2,914				3,978			
Number of volunteers				266				335			
Recycled materials (in pounds)		3,228	3,059	5,107	2,137	4,502	3,606	NA	5,140		26,779

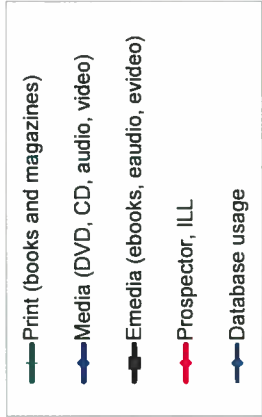
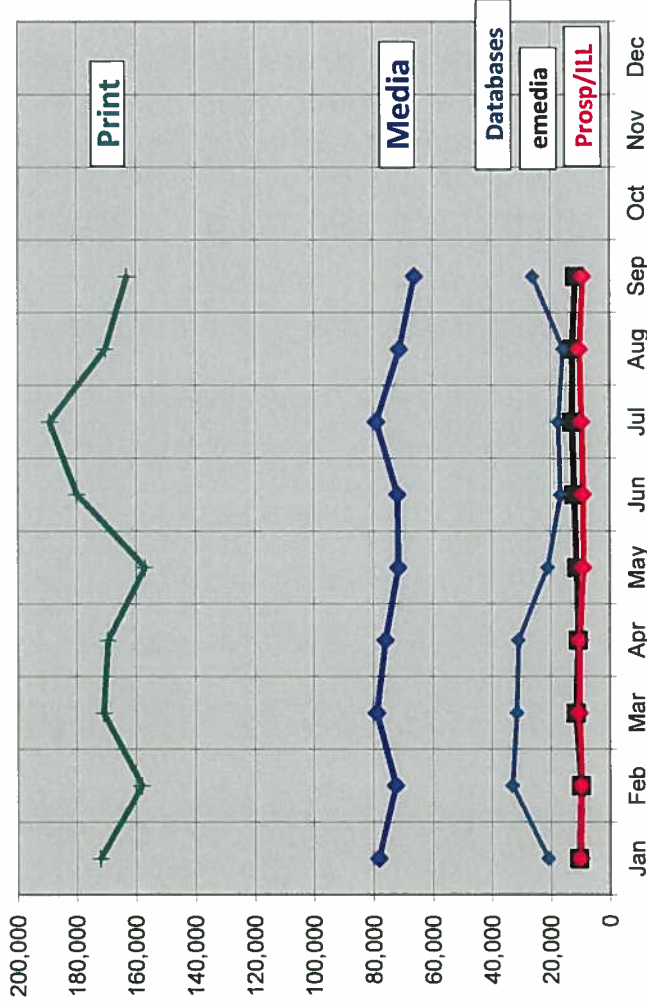
Total Circulation Chart
Includes circulation of print, media and emedia

Monthly Circulation Comparison

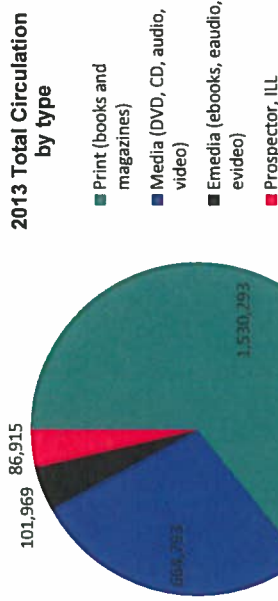


Year	Jan	Feb	Mar	Apr	May	Jun	Jul	Aug	Sep	Oct	Nov	Dec	Total	% increase Y-T-D
2011	275,975	260,005	288,151	266,615	271,044	298,580	295,470	281,755	259,052	271,997	276,243	230,740	3,275,627	
2012	266,673	261,436	270,562	255,139	260,073	288,896	294,807	272,001	258,715	274,271	262,979	242,838	3,208,390	-2.05%
2013	270,643	249,805	271,667	266,301	248,631	272,702	290,151	264,262	249,808				2,383,970	-1.83%

2013 Circulation by Type and Database Usage



2013 Total Circulation by type



	Jan	Feb	Mar	Apr	May	Jun	Jul	Aug	Sep	Oct	Nov	Dec	Total
Print (books and magazines)	172,153	157,999	171,062	169,544	156,969	179,914	189,128	170,419	163,105	163,105	163,105	163,105	1,530,293
Media (DVD, CD, audio, video)	78,206	72,518	78,804	75,899	71,485	71,798	78,899	71,147	66,037	66,037	66,037	66,037	664,793
Emedia (ebooks, eaudio, evideo)	10,290	9,666	11,490	10,673	11,151	12,035	12,620	12,500	11,544	11,544	11,544	11,544	101,969
Prospector, ILL	9,994	9,622	10,311	10,185	9,026	8,955	9,504	10,196	9,122	9,122	9,122	9,122	86,915
Total Circulation	270,643	249,805	271,667	266,307	248,637	272,702	290,151	264,262	249,808	249,808	249,808	249,808	2,383,970
Database usage	20,951	33,043	31,547	31,010	21,068	16,608	17,378	15,840	26,076	26,076	26,076	26,076	213,521

Print (books and magazines)
 Media (DVD, CD, audio, video)
 Emedia (ebooks, eaudio, evideo)
 Prospector, ILL
 Total Circulation
 Database usage