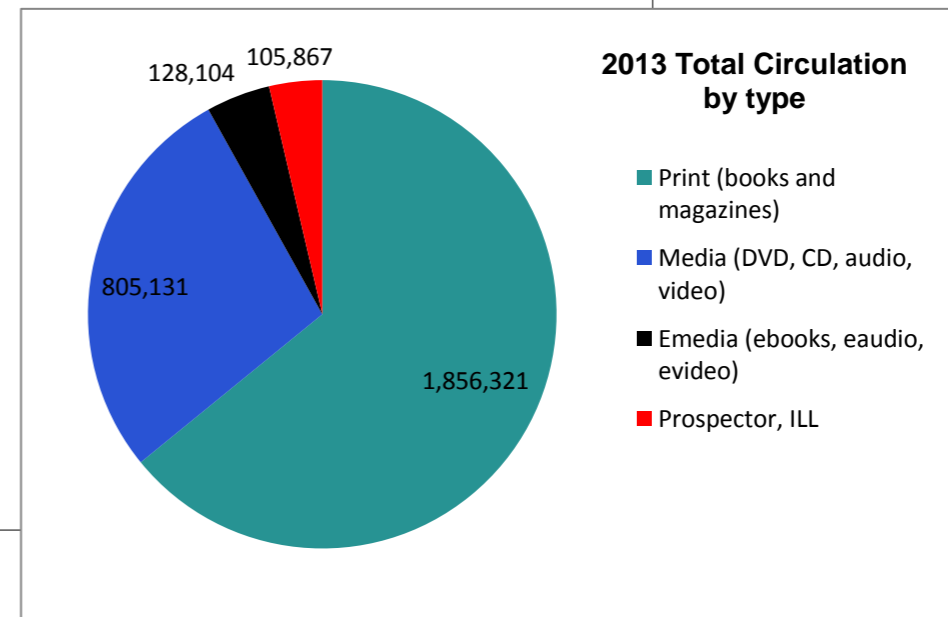
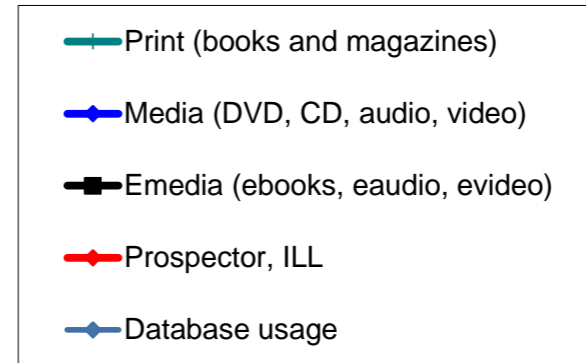
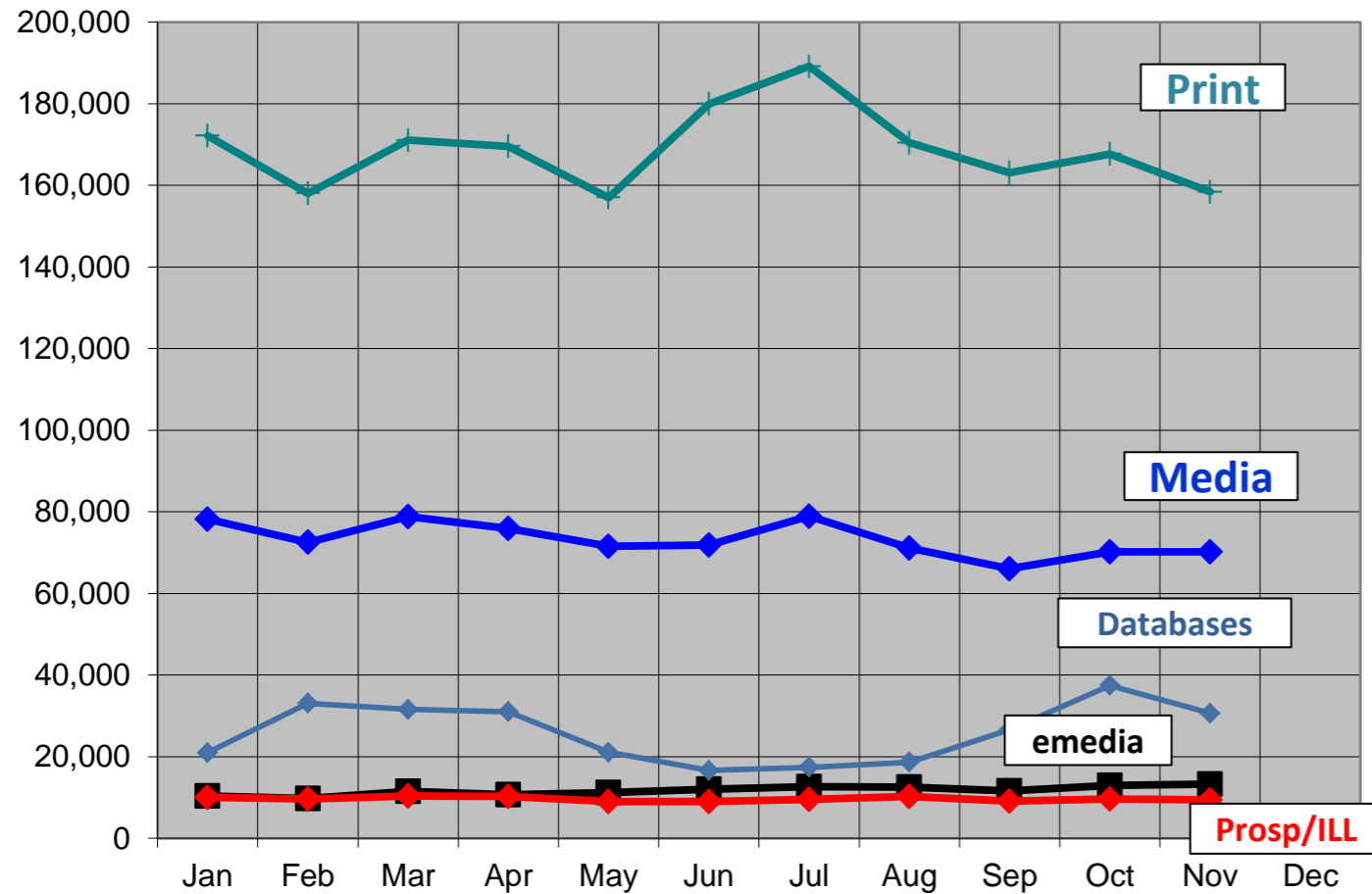


2013 Monthly Activity Report

Borrowers		January	February	March	April	May	June	July	August	Sept	October	November	Y-T-D
	Total	135,139	136,234	137,180	138,309	139,269	140,617	141,928	143,555	144,885	146,213	147,173	
	Purged/Deleted	122	68	135	41	96	190	444	69	66	82	154	1,467
	New	1,480	1,163	1,081	1,170	1,056	1,538	1,422	1,696	1,396	1,410	1,114	14,526
Collection (print & media)	Added	3,628	3,682	4,328	4,224	4,966	4,137	4,011	4,124	3,851	3,774	3,697	44,422
	Removed	2,820	210	208	141	140	21,563	4,793	3,621	4,143	4,425	5,139	47,203
	Total number of items (end of month)	403,146	406,553	410,692	414,763	419,583	402,128	401,337	401,824	402,169	400,915	399,363	
Computer Usage	Sign up computer sessions	18,382	17,751	17,881	17,304	17,075	17,264	19,280	18,814	15,643	19,250	16,561	195,205
	Wireless	7,973	10,192	9,979	10,762	9,788	8,296	9,337	10,260	11,672	13,359	11,562	113,180
Door Traffic		90,867	90,336	98,708	99,628	90,840	98,098	106,807	101,915	95,193	104,750	82,724	1,059,866
eMedia Circulation	ebooks	8,121	7,235	8,503	8,033	8,350	9,017	9,442	9,200	8,525	9,315	9,503	95,244
	eaudiobooks	2,142	2,008	2,343	2,047	2,180	2,289	2,524	2,585	2,380	2,549	2,643	25,690
	emusic	9	7	5	2	2	5	3	2	3	1	3	42
	evideo	18	7	8	5	5	3	7	3	8	4	5	73
	emagazine		409	631	586	614	721	644	710	628	1,044	1,068	7,055
	TOTAL	10,290	9,666	11,490	10,673	11,151	12,035	12,620	12,500	11,544	12,913	13,222	128,104
Database Usage	Sessions/Searches	20,951	33,043	31,547	31,010	21,068	16,608	17,378	18,603	26,568	37,413	30,613	284,802
Programming	<i>Attendance</i>												
	Children's	3735	3008	3024	2984	2601	2879	5058	70	2979	3619		29,957
	Teen	23	45	2	48	19	191	93	22	50	97		590
	Adult	635	1026	1001	559	651	561	420	737	782	1912		8,284
	All Ages	138	282	575	327	181	65	282	124	96	356		2,426
	Outreach	984	801	1123	906	4455	891	NA	NA	596	1315		11,071
	TOTAL	5,515	5,162	5,725	4,824	7,907	4,587	5,853	953	4,503	7,299		52,328
	<i>Number of Programs</i>												
	Children's	105	97	84	107	91	53	75	3	97	122		834
	Teen	2	2	1	3	2	9	5	2	3	5		34
	Adult	24	31	27	25	19	24	14	22	33	60		279
	All Ages	6	7	6	8	3	7	6	2	2	4		51
	Outreach	59	55	58	49	70	60	NA	NA	39	65		455
	TOTAL	196	192	176	192	185	153	100	29	174	256		1,653
1st Quarter Volunteer Services	Number of volunteer hours			2,914			3,978				4,903		
	Number of volunteers			266			335				448		
Recycled materials (in pounds)		3,228	3,059	5,107	2,137	4,502	3,606	NA	5,140		4,349	2,121	33,249

2013 Circulation by Type and Database Usage

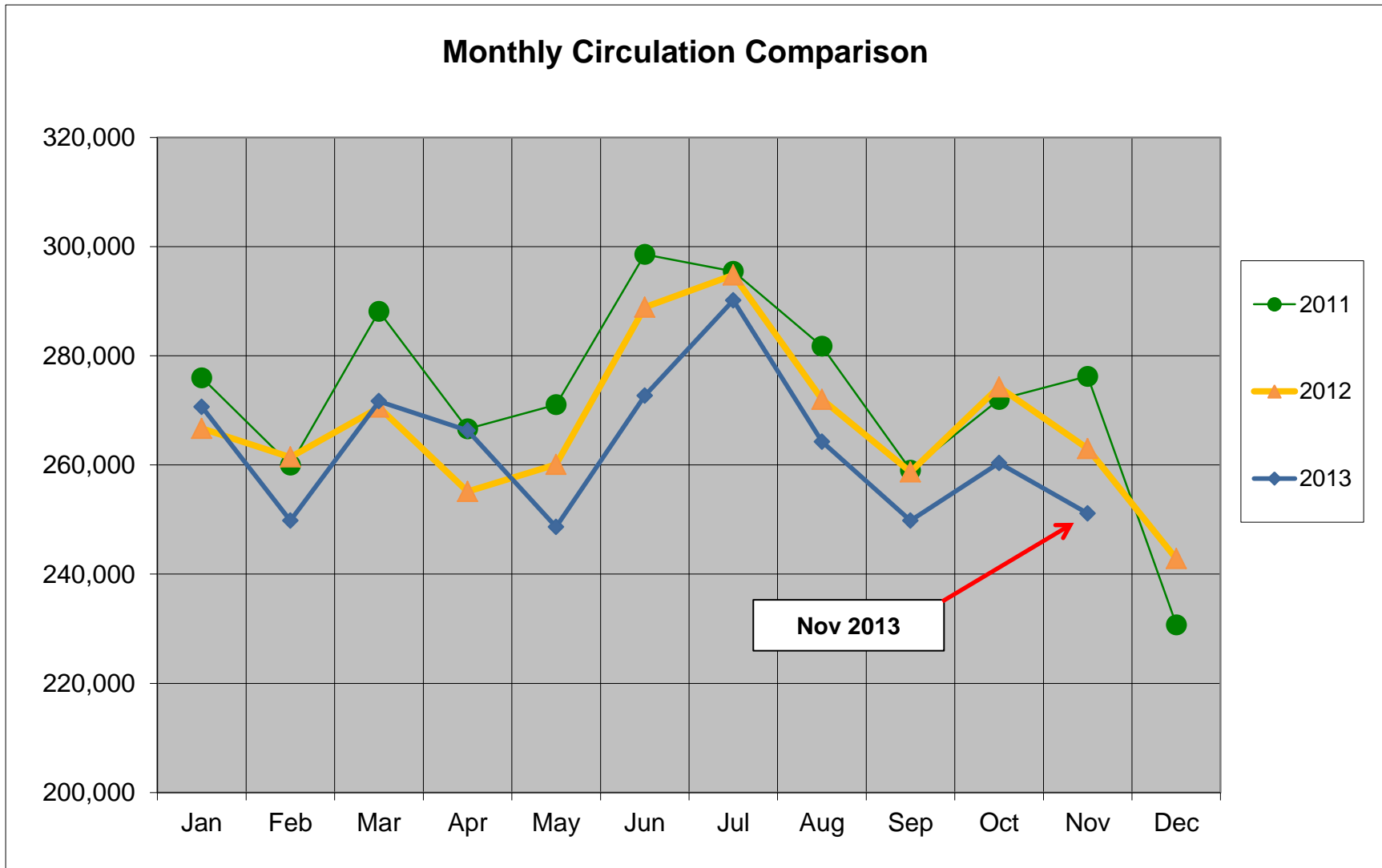


Print (books and magazines)
 Media (DVD, CD, audio, video)
 Emedia (ebooks, eaudio, evideo)
 Prospector, ILL
 Total Circulation
 Database usage

	Jan	Feb	Mar	Apr	May	Jun	Jul	Aug	Sep	Oct	Nov	Dec	Total
Print (books and magazines)	172,153	157,999	171,062	169,544	156,969	179,914	189,128	170,419	163,105	167,656	158,372		1,856,321
Media (DVD, CD, audio, video)	78,206	72,518	78,804	75,899	71,485	71,798	78,899	71,147	66,037	70,202	70,136		805,131
Emedia (ebooks, eaudio, evideo)	10,290	9,666	11,490	10,673	11,151	12,035	12,620	12,500	11,544	12,913	13,222		128,104
Prospector, ILL	9,994	9,622	10,311	10,185	9,026	8,955	9,504	10,196	9,122	9,573	9,379		105,867
Total Circulation	270,643	249,805	271,667	266,301	248,631	272,702	290,151	264,262	249,808	260,344	251,109		2,895,423
Database usage	20,951	33,043	31,547	31,010	21,068	16,608	17,378	18,603	26,568	37,413	30,613		284,802

Total Circulation Chart

Includes circulation of print, media and emedia



	Jan	Feb	Mar	Apr	May	Jun	Jul	Aug	Sep	Oct	Nov	Dec	Total	% increase Y-T-D
2011	275,975	260,005	288,151	266,615	271,044	298,580	295,470	281,755	259,052	271,997	276,243	230,740	3,275,627	
2012	266,673	261,436	270,562	255,139	260,073	288,896	294,807	272,001	258,715	274,271	262,979	242,838	3,208,390	-2.05%
2013	270,643	249,805	271,667	266,301	248,631	272,702	290,151	264,262	249,808	260,344	251,109		2,895,423	-2.36%