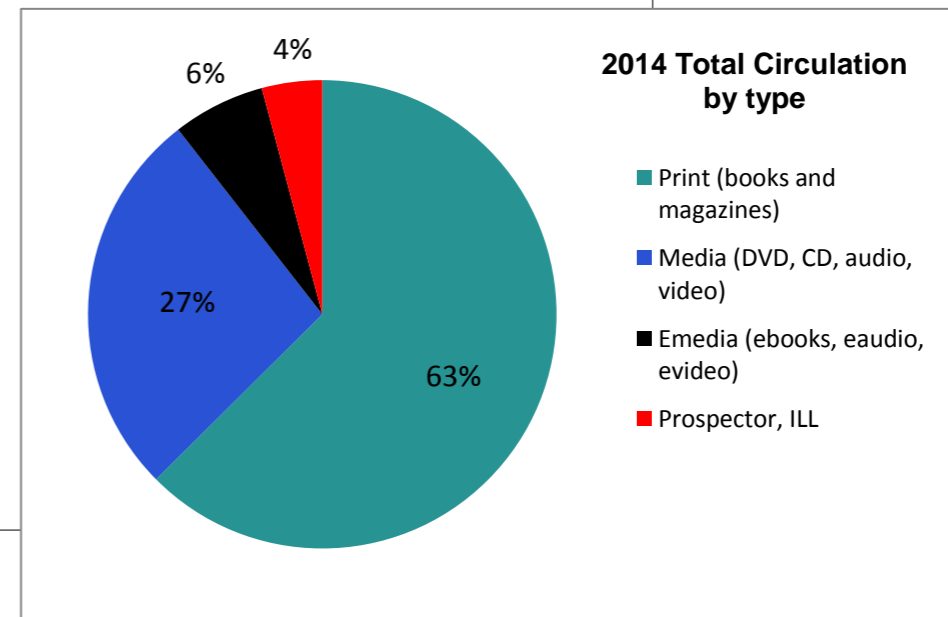
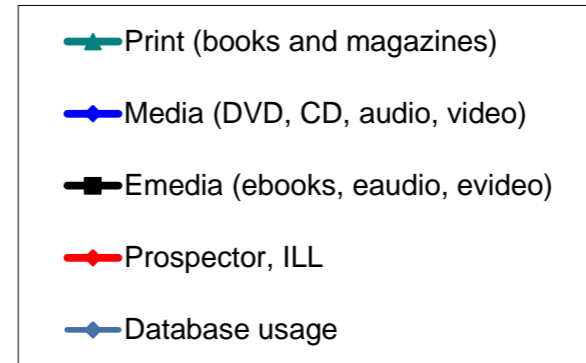
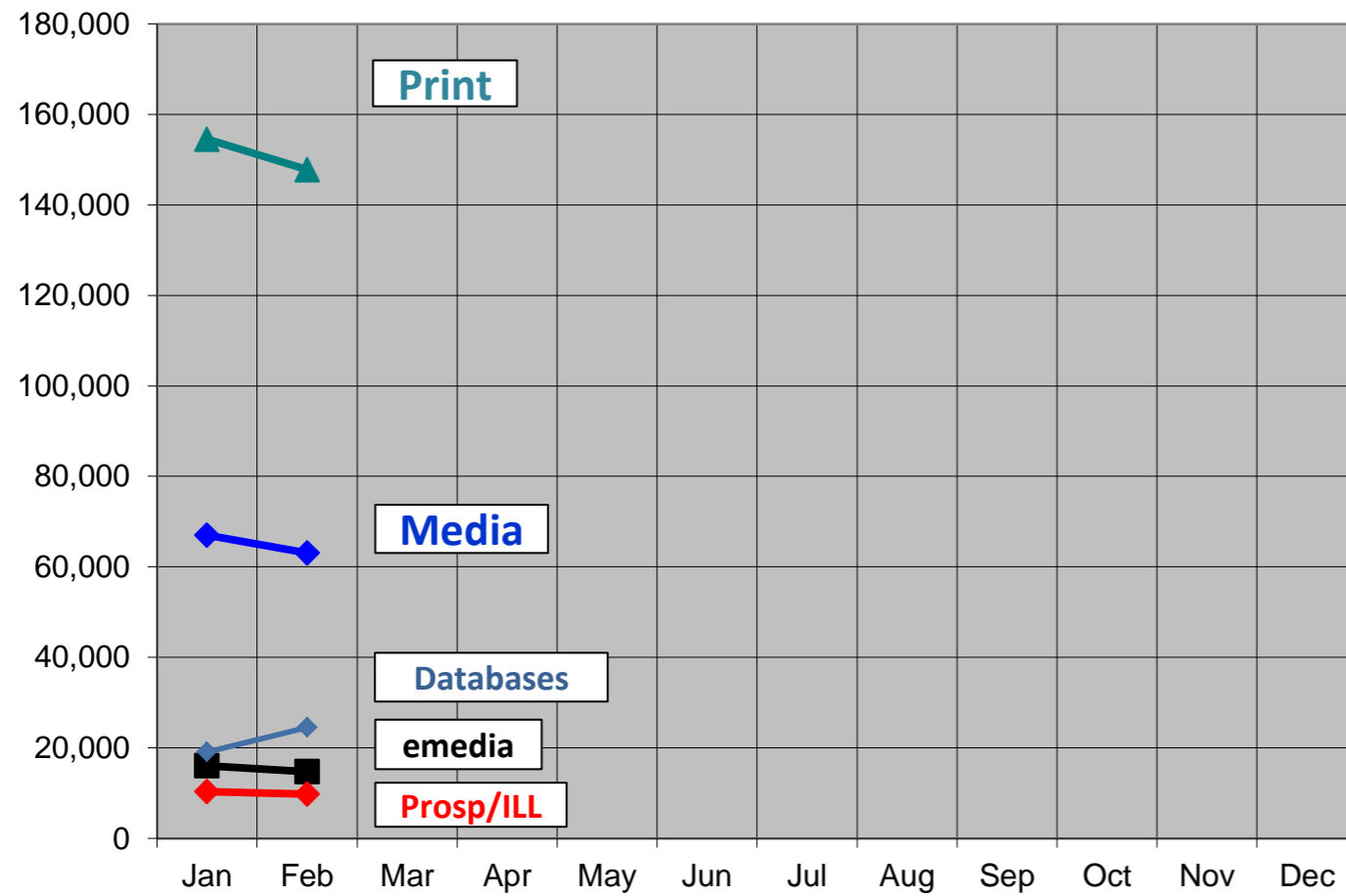


2014 Monthly Activity Report

Borrowers		January	February	March	Y-T-D
	Total	142,187	143,371		
	Purged/Deleted	96	86		182
	New	1,371	1,270		2,641
Collection (print & media)	Added	2,886	3,539		6,425
	Removed	8,614	2,938		11,552
	Total number of items (end of month)	396,068	396,752		
Computer Usage					
	Sign up computer sessions	17,124	17,092		34,216
	Sign up computer number of hours	10,114	10,222		20,336
	Wireless	10,798	13,371		24,169
Door Traffic		90,585	93,975		184,560
eMedia Circulation	ebooks	12,086	10,981		23,067
	eaudiobooks	3,033	2,741		5,774
	emusic	2	2		4
	evideo	6	3		9
	emagazine	928	1,025		1,953
	TOTAL	16,055	14,752	0	30,807
Database Usage	Sessions/Searches	19,077	24,541		43,618
Programming					
	<i>Attendance</i>				
	Children's	1753			1,753
	Teen	41			41
	Adult	695			695
	All Ages	65			65
	Outreach	974	1202		2,176
	TOTAL	3,528	1,202	0	4,730
	<i>Number of Programs</i>				
	Children's	62			62
	Teen	2			2
	Adult	26			26
	All Ages	3			3
	Outreach	40	53		93
	TOTAL	133	53	0	186
1st Quarter Volunteer Services					
	Number of volunteer hours				0
	Number of volunteers				0
Recycled materials (in pounds)		1,882			1,882

2014 Circulation by Type and Database Usage

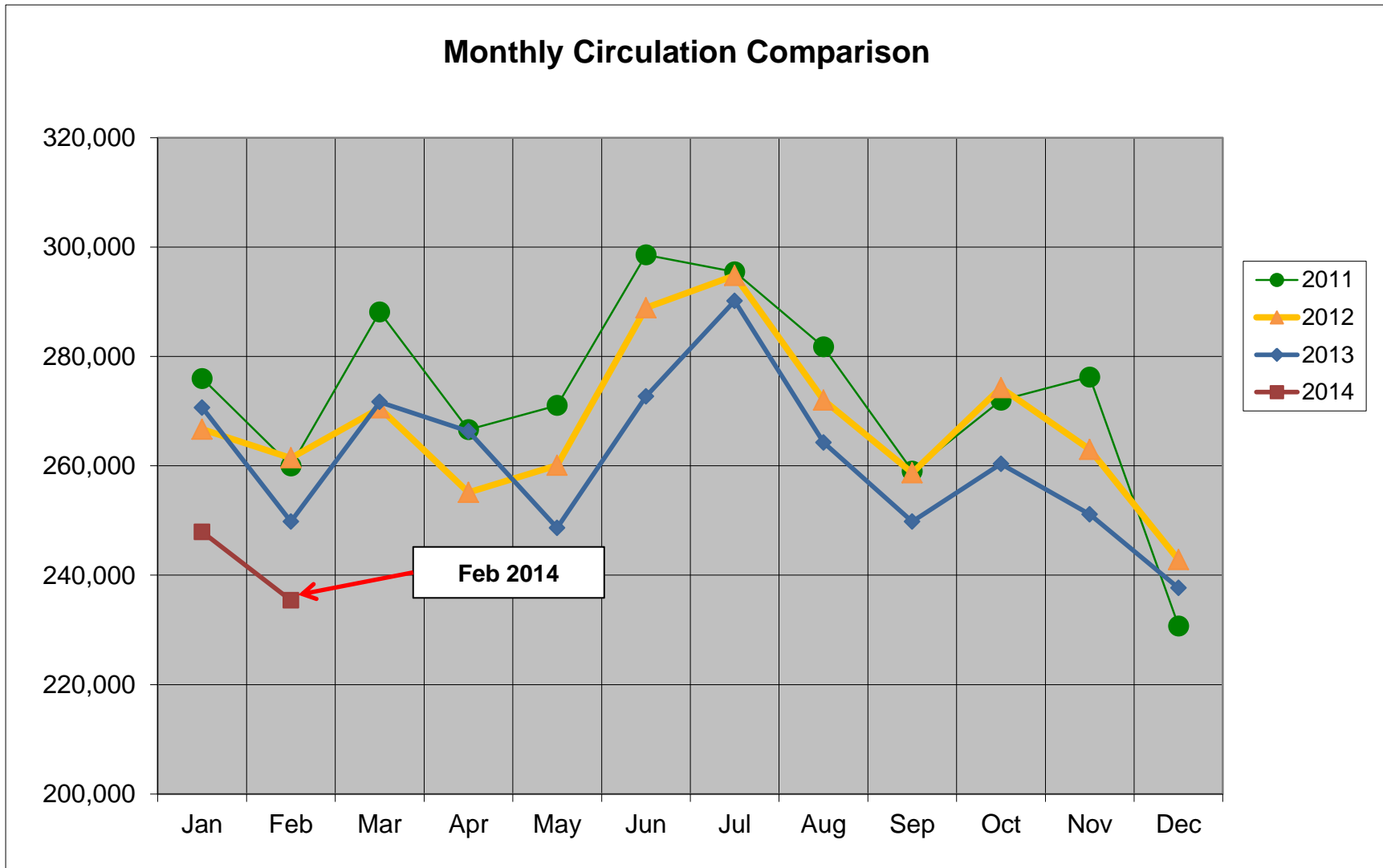


2014
 Print (books and magazines)
 Media (DVD, CD, audio, video)
 Emedia (ebooks, eaudio, evideo)
 Prospector, ILL
 Total Circulation
 Database usage

	Jan	Feb	Mar	Apr	May	Jun	Jul	Aug	Sep	Oct	Nov	Dec	Total	
Print (books and magazines)	154,534	147,792											302,326	63%
Media (DVD, CD, audio, video)	66,969	63,035											130,004	27%
Emedia (ebooks, eaudio, evideo)	16,055	14,752											30,807	6%
Prospector, ILL	10,337	9,806											20,143	4%
Total Circulation	247,895	235,385											483,280	
Database usage	19,077	24,541											43,618	

Total Circulation Chart

Includes circulation of print, media and emedia



	Jan	Feb	Mar	Apr	May	Jun	Jul	Aug	Sep	Oct	Nov	Dec	Total	% increase Y-T-D
2011	275,975	260,005	288,151	266,615	271,044	298,580	295,470	281,755	259,052	271,997	276,243	230,740	3,275,627	
2012	266,673	261,436	270,562	255,139	260,073	288,896	294,807	272,001	258,715	274,271	262,979	242,838	3,208,390	-2.05%
2013	270,643	249,805	271,667	266,301	248,631	272,702	290,151	264,262	249,808	260,344	251,109	237,687	3,133,110	-2.35%
2014	247,895	235,385											483,280	-7.14%