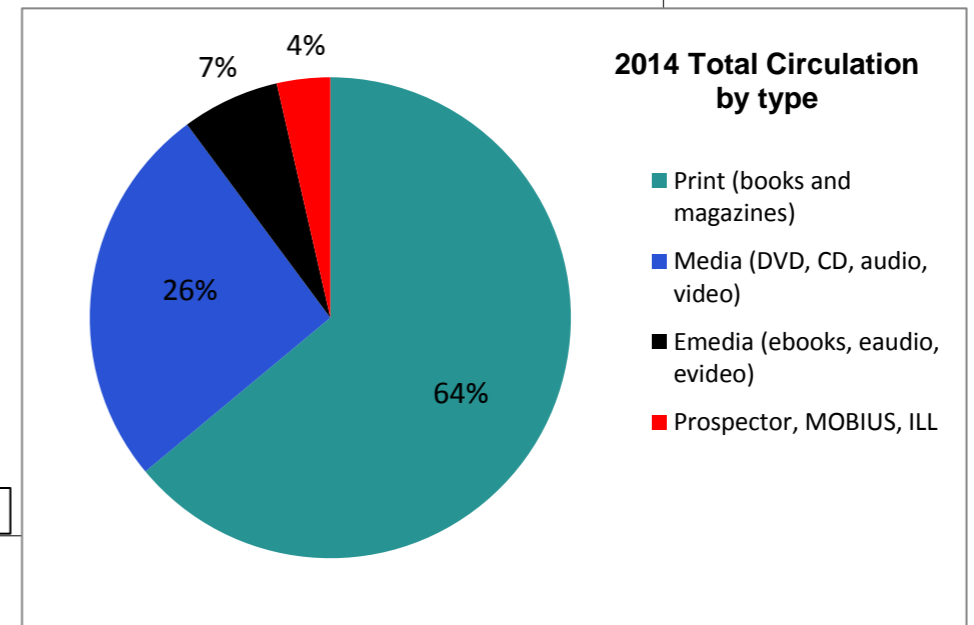
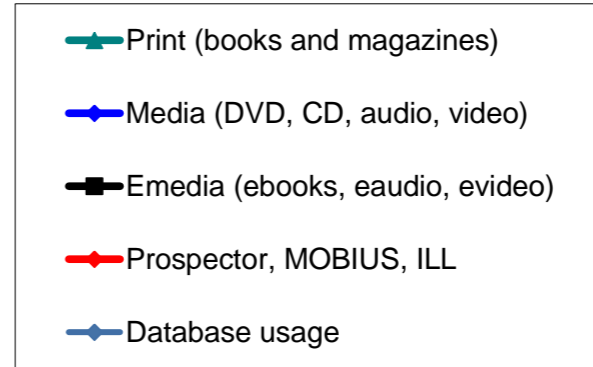
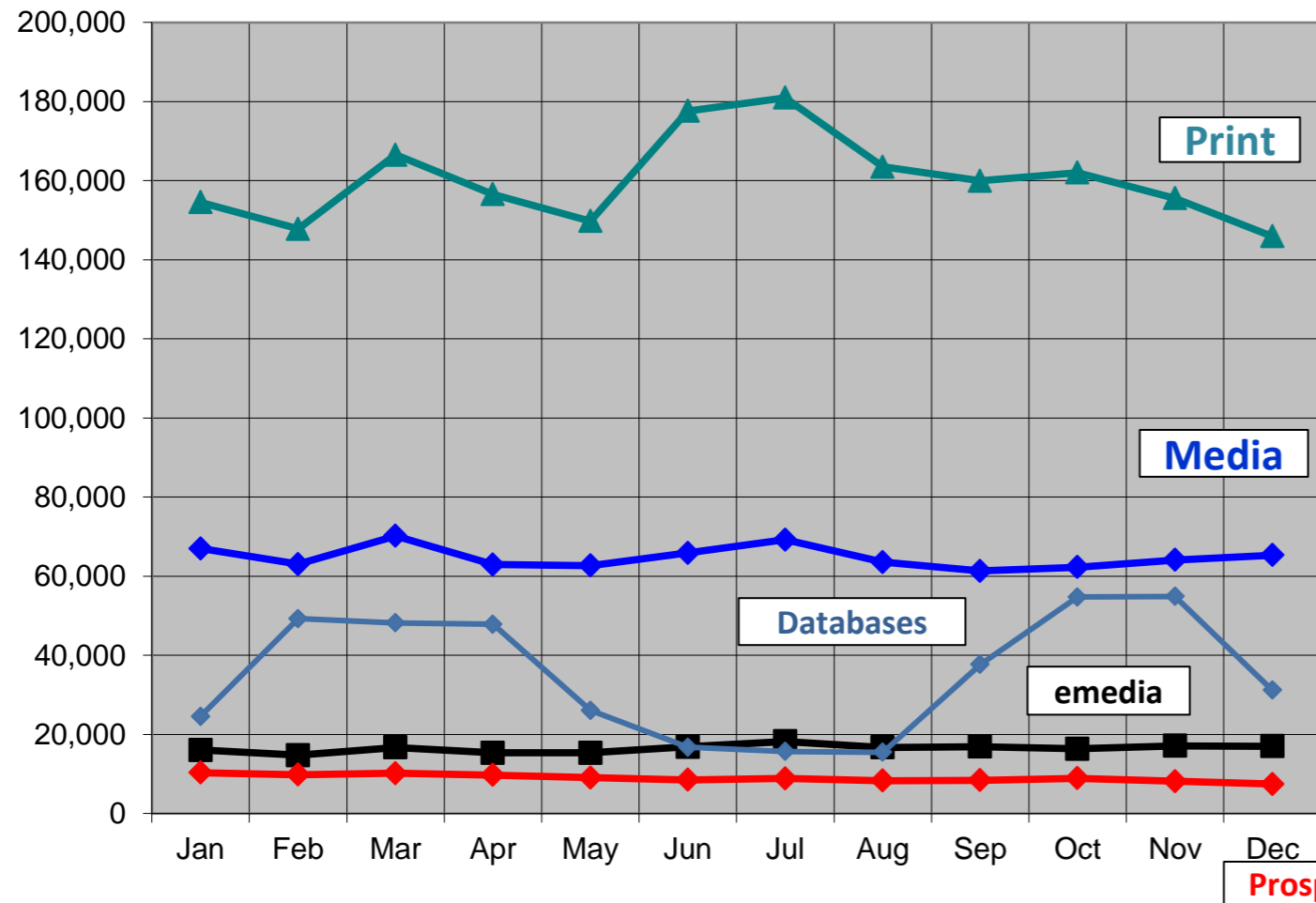


2014 Monthly Activity Report

Borrowers		January	February	March	April	May	June	July	August	September	October	November	December	Y-T-D
Total		142,187	143,371	144,464	145,521	146,628	143,982	145,267	147,176	148,689	149,976	150,957	146,079	
Purged/Deleted		96	86	77	76	109	4,197	177	141	130	62	128	5,771	11,050
New		1,371	1,270	1,200	1,102	1,217	1,551	1,462	2,050	1,643	1,349	1,109	893	16,217
Collection (print & media)														
Added		2,886	3,539	3,987	4,711	4,247	4,459	4,205	3,651	4,149	4,519	3,575	3,584	47,512
Removed		8,614	2,938	3,563	551	7,871	466	345	5,454	504	9,715	254	8,422	48,697
Total number of items (end of month)		396,068	396,752	397,220	401,439	397,796	401,808	405,679	403,896	407,531	402,350	405,631	400,850	
Computer Usage														
Sign up computer sessions		17,124	17,092	18,373	17,176	16,851	17,526	18,284	18,220	17,432	17,363	15,450	14,557	205,448
Sign up computer number of hours		10,114	10,222	10,775	10,357	9,699	10,070	10,694	10,596	10,145	10,085	9,214	8,603	120,574
Wireless		10,798	13,371	12,712	14,298	11,461	10,751	11,752	13,189	15,782	16,160	13,205	11,009	154,488
Door Traffic		90,585	93,975	103,861	101,041	89,117	99,667	98,031	96,701	89,372	92,926	80,563	278,999	1,314,838
eMedia Circulation														
ebooks		12,086	10,981	12,322	11,266	11,101	12,109	13,196	11,936	12,147	11,209	11,683	12,001	142,037
eaudiobooks		3,033	2,741	3,494	3,282	3,386	3,706	4,195	3,849	3,885	3,769	3,842	3,785	42,967
emusic		2	2	2	1	2	2	0	2	2	5	4	8	32
evideo		6	3	11	3	2	6	10	0	0	16	2	1	60
emagazine		928	1,000	881	786	831	1,033	840	910	855	1,342	1,559	1,230	12,195
TOTAL		16,055	14,727	16,710	15,338	15,322	16,856	18,241	16,697	16,889	16,341	17,090	17,025	197,291
Database Usage														
Sessions/Searches		24,570	49,244	48,215	47,815	26,057	16,768	15,689	15,489	37,681	54,715	54,894	31,177	391,028
Programming														
<i>Attendance</i>														
Children's		3066	3130	2198	3632	3104	3206	4965	152	3085	3200	2451		32,189
Teen		41	74	13	113	77	163	108	20	59	49	65		782
Adult		739	794	429	833	1007	639	690	686	838	1290	366		8,311
All Ages		65	389	0	590	388	428	204	151	128	114	520		2,977
Other Locations				1000	335	140	700			1024	102	700		4,001
Outreach		974	1202	2314	1833	7016	1041	1003	2145	1024	2400	1365		22,317
TOTAL		4,885	5,589	5,954	7,336	11,732	6,177	6,970	3,154	6,158	7,155	5,467		70,577
<i>Number of Programs</i>														
Children's		109	106	70	68	93	51	76	10	118	123	92		916
Teen		2	4	2	4	5	9	5	1	3	4	65		104
Adult		30	30	14	25	16	19	18	22	31	44	9		258
All Ages		3	8	0	5	10	26	7	6	5	6	12		88
Other Locations				1	2	1	1			2	1	1		9
Outreach		40	53	56	68	86	56	48	12	49	68	55		591
TOTAL		184	201	143	172	211	162	154	51	208	246	234		1,966
Volunteer Services														
Number of volunteer hours				3,721	1038	896	594	904	273	1048	826	492		9,792
Number of volunteers				342	151	129	83	102	62	136	263	88		1,356
Recycled materials (in pounds)		3,456	1,915	5,572	4,038	2,743	6,397	2853	4,244	5627	5,382	1,783		44,010

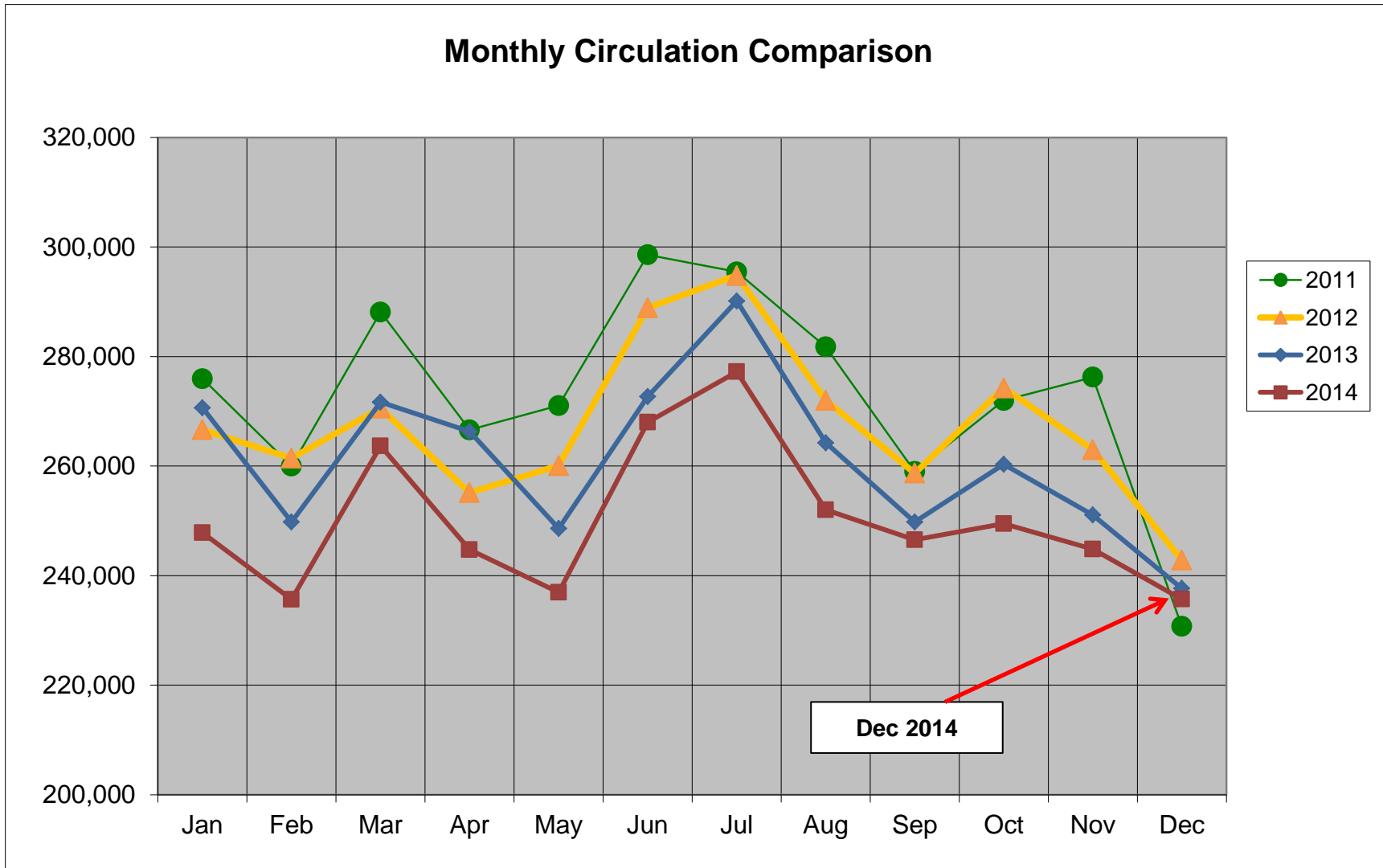
2014 Circulation by Type and Database Usage



2014	Jan	Feb	Mar	Apr	May	Jun	Jul	Aug	Sep	Oct	Nov	Dec	Total	% of total
Print (books and magazines)	154,534	147,792	166,499	156,527	149,752	177,626	180,956	163,459	159,952	162,016	155,516	145,922	1,920,551	64%
Media (DVD, CD, audio, video)	66,969	63,035	70,175	62,924	62,691	65,838	69,183	63,558	61,326	62,245	64,072	65,288	777,304	26%
Emedia (ebooks, eaudio, evideo)	16,055	14,727	16,710	15,338	15,322	16,856	18,241	16,697	16,889	16,341	17,090	17,025	197,291	7%
Prospector, MOBIUS, ILL	10,337	9,806	10,187	9,711	9,059	8,515	8,843	8,306	8,378	8,898	8,153	7,458	107,651	4%
Total Circulation	247,895	235,360	263,571	244,500	236,824	268,835	277,223	252,020	246,545	249,500	244,831	235,693	3,002,797	
Database usage	24,570	49,244	48,215	47,815	26,057	16,768	15,689	15,489	37,681	54,715	54,894	31,177	422,314	

Total Circulation Chart

Includes circulation of print, media and emedia



	Jan	Feb	Mar	Apr	May	Jun	Jul	Aug	Sep	Oct	Nov	Dec	Total	% increase Y-T-D
2011	275,975	260,005	288,151	266,615	271,044	298,580	295,470	281,755	259,052	271,997	276,243	230,740	3,275,627	
2012	266,673	261,436	270,562	255,139	260,073	288,896	294,807	272,001	258,715	274,271	262,979	242,838	3,208,390	-2.05%
2013	270,643	249,805	271,667	266,301	248,631	272,702	290,151	264,262	249,808	260,344	251,109	237,687	3,133,110	-2.35%
2014	247,835	235,674	263,674	244,743	236,963	268,024	277,223	252,020	246,545	249,500	244,831	235,693	3,002,725	-4.16%